



K-State turf: June 26 2008

1) Brown Patch is active.

One of my neighbors had brown patch lesions as well as cobwebby mycelium crawling around their tall fescue yard a few days ago, and a number of people around the state have told me they are seeing a lot of it around. For more information on brown patch for commercial turf, go to

<http://www.ksuturf.com/ListservArchive.html> and click on April 7 2008

Or, link directly to the pdf by going here:

http://www.ksuturf.com/LISTServArchive/2008_04_07_brown_patch_commercial.pdf

2) Field day info online

The Turfgrass Field Day will be on August 7. Topics will include cultivar updates, drought, diseases, insects, fertility issues, and more. You can download a registration form for the Turf Field Day at this site:

<http://www.ksuturf.com/Documents/2008TurfFieldDayProgram.pdf>

You can get some credit hours for pesticide certification, and GCSAA credit, too.

3) Diagnostic lab next week.

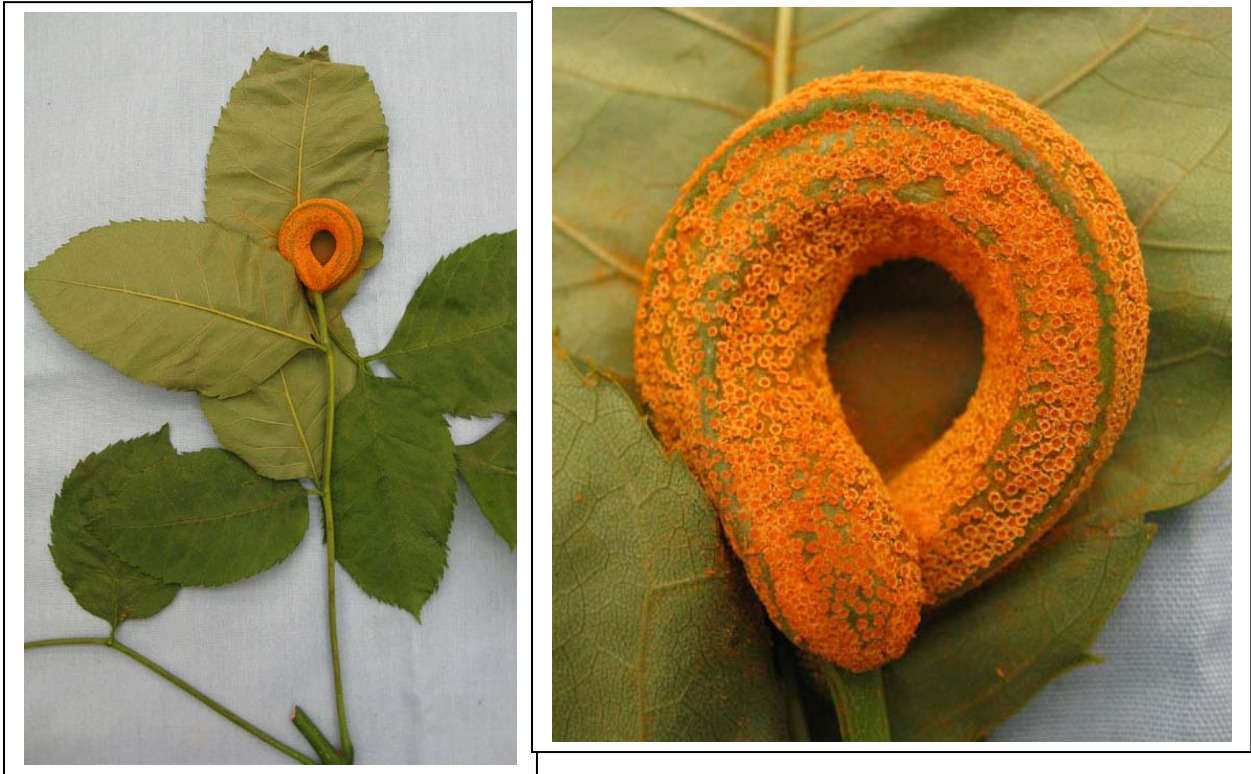
I'll be gone a few days over the 4th for a family reunion, but the lab will be open. Our diagnostic lab manager extraordinaire, Judy O'Mara, will be here to handle all samples, great and small.

4) One of the top 10 cool samples of all time:

I can't help but put this in (see next page)

Is it an orange caterpillar????

Is it a Cheetoh?????



If you deal with ash trees, you might be familiar with a disease called ash rust. The disease makes leaf spots, but it can also infect the leaf stems causing swelling and distortion. In this case, the stem is so distorted it curled all the way around, and it is covered with orange pustules. In the photo on the right you can see the individual, tiny, cup-shaped pustules.